



# Tovel

1221540 ONTARIO LIMITED O/A

77 BRADWICK DR., CONCORD (Tor.), ONTARIO ., CANADA L4K 1K5  
 FACTORY (800) 273-9904 TEL. (905) 738-5511 FAX (905) 738-7934

## TELESCOPIC SERIES Model TL 20-22-25 2 WHEEL DRIVE 2 WHEEL STEER

Visit us at: [www.tovel.com](http://www.tovel.com) or E-mail: [inquiries@tovel.com](mailto:inquiries@tovel.com)

### GENERAL DATA:

- \* **ENGINE** - PERKINS DIESEL 1004-4T TURBO (Inter-cooled) HORSE POWER 122.
- \* **TRANSMISSION** - POWER SHIFT - 3 SPEED FORWARD AND REVERSE.
- \* **STEERING** - POWER ASSIST REAR 2 WHEEL.
- \* **AXLES** HEAVY DUTY, RIGID MOUNT FRONT DRIVE WITH PLANETARY GEAR REDUCTION, INBOARD OIL BATH DISC BRAKES. REAR AXLE IS H.D. OSCILLATING WITH INTEGRATED STEERING.
- \* **BRAKES** POWER - MICO EQUIPPED FULLY HYDRAULIC POWER BRAKES. SYSTEM INCLUDES AN ACCUMULATOR FAILSAFE TO APPLY STOPPING POWER IN THE EVENT OF ENGINE SHUT DOWN.
- \* **TIRES** - RADIAL TRUCK TYPE 385/65R X 22.5 - 18 PLY (DUAL) FRONT & (SINGLE) REAR.
- \* **BOOM** CONSTRUCTED FROM HEAVY DUTY STRUCTURAL TUBING, 2 STAGES, REPLACEABLE WEAR PADS, SAFETY LOCK VALVES STANDARD ON ALL HYDRAULIC CIRCUITS.

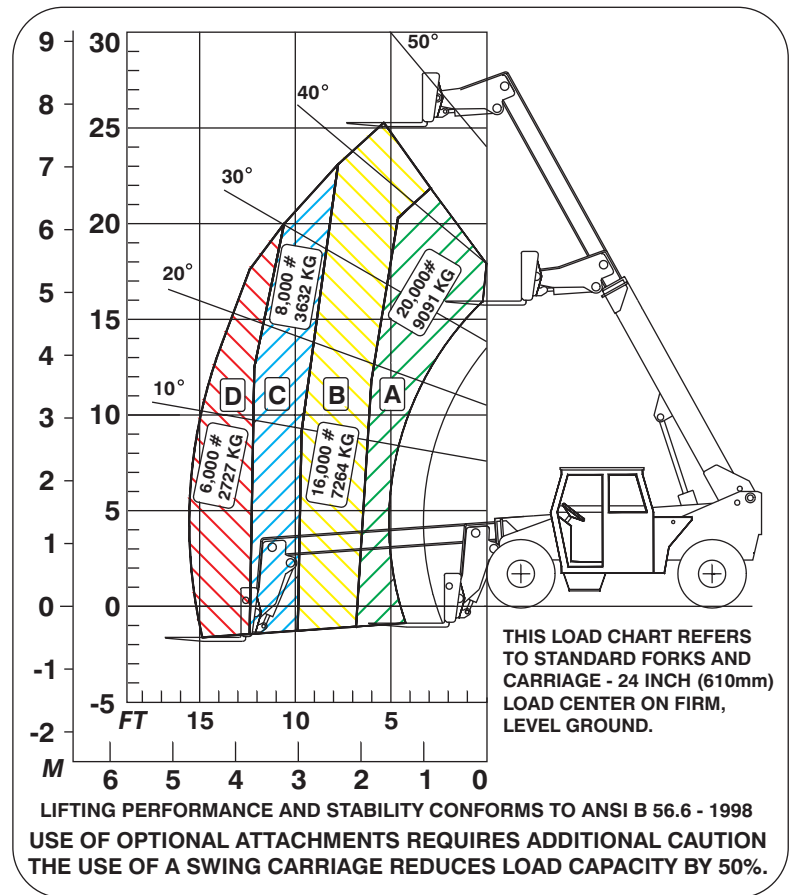
### SPECIFICATIONS:

#### DIMENSIONS

A	WHEELBASE	135"
B	OVERALL LENGTH (LESS FORKS)	236"
C	DRIVE AXLE TO CARRIAGE	24"
D	REAR OVERHANG	37"
E	TOP OF CAB	98"
F	OVERALL WIDTH	104"
	OUTSIDE TURNING RADIUS	129"
	MAXIMUM SPEED (m.p.h.)	16
	UNIT WEIGHT	43,200 lbs.

#### STANDARD EQUIPMENT:

- ◆ NEUTRAL GEAR SELECT SAFETY START IGNITION SWITCH.
- ◆ FULL GAUGE CLUSTER INCLUDES HOUR METER.
- ◆ DASH MOUNT HORN SWITCH ◆ BACK-UP BEEPER.
- ◆ VANDALISM LOCKOUT PROTECTION TO MAIN COMPONENTS.
- ◆ ELECTRICAL SYSTEM 12 VOLT, TWO HEAVY DUTY BATTERIES .
- ◆ DRY TYPE AIR CLEANER - TWIN ELEMENT.
- ◆ ANTIFREEZE TYPE COOLANT IN RADIATOR.
- ◆ MECHANICAL LEVER FOR EMERGENCY HAND BRAKE.
- ◆ FENDERS ON ALL FOUR TIRES
- ◆ ADJUSTABLE SEAT COMPLETE WITH SEAT BELT.



#### OPTIONAL EQUIPMENT: ( items not listed consult factory.)

TOTALLY ENCLOSED CAB COMPLETE WITH SAFETY GLASS AND FRONT WINDSHIELD WIPER. HEATING AND AIR CONDITIONING.  
 VARIOUS CARRIAGE AND ATTACHMENTS (CONSULT WITH FACTORY).

THE INFORMATION CONTAINED HEREIN IS GENERAL IN NATURE AND IS NOT INTENDED FOR SPECIFIC APPLICATION PURPOSES. TOVEL RESERVES THE RIGHT TO MAKE CHANGES IN SPECIFICATIONS SHOWN HEREIN, AND IMPROVEMENTS, OR DISCONTINUE MANUFACTURE AT ANY TIME WITHOUT NOTICE OR OBLIGATION.