

# TOVELAZER

16 to 20,000 POUND CAPACITY  
ROUGH TERRAIN FORKLIFTS  
TELESCOPIC BOOM



77 BRADWICK DR., CONCORD (TORONTO), ONTARIO, CANADA L4K 1K5  
(FACTORY) 800-273-9904 TEL.# (905) 738-5511 FAX# (905) 738-7934

USA SALES 1 800-892-7347

**TM**

**TOVEL**

DESIGNERS AND MANUFACTURERS OF CONSTRUCTION EQUIPMENT



# Tovel

1221540 ONTARIO LIMITED O/A

77 BRADWICK DR., CONCORD (Tor.), ONTARIO ., CANADA L4K 1K5  
 FACTORY (800) 273-9904 TEL. (905) 738-5511 FAX (905) 738-7934

## TELESCOPIC SERIES Model TL 16-44-34 4 WHEEL DRIVE 4 WHEEL STEER

Visit us at: [www.tovel.com](http://www.tovel.com) or E-mail: [inquiries@tovel.com](mailto:inquiries@tovel.com)

### GENERAL DATA:

- \* **ENGINE** - PERKINS DIESEL 1006-6T TURBO HORSE POWER 165 with SPARK ARRESTOR EXHAUST.
- \* **TRANSMISSION** - POWER SHIFT - 3 SPEED FORWARD AND REVERSE.
- \* **STEERING** - POWER ASSIST SELECT EITHER 2 WHEEL, 4 OR CRAB.
- \* **AXLES** HEAVY DUTY FRONT & REAR WITH PLANETARY REDUCTION, LIMITED SLIP DIFFERENTIALS.
- \* **BRAKES** DISK TYPE POWER - MICO EQUIPPED FULLY HYDRAULIC POWER BRAKES. SYSTEM INCLUDES AN ACCUMULATOR FAILSAFE TO APPLY STOPPING POWER IN THE EVENT OF ENGINE SHUT DOWN.
- \* **TIRES** - LOADER GRADER TYPE 17.5 X 25 ON FRONT & REAR MOUNTED ON HEAVY DUTY RIMS.
- \* **FRAME LEVELING** - HYDRAULIC ACTUATED TO 10 DEGREES IN EITHER DIRECTION.
- \* **BOOM** CONSTRUCTED FROM HEAVY DUTY STRUCTURAL TUBING, 2 STAGES, REPLACEABLE WEAR PADS, SAFETY LOCK VALVES STANDARD ON ALL HYDRAULIC CIRCUITS.
- \* **SHIPPING WEIGHT:** 36,000 POUNDS.

### SPECIFICATIONS:

#### DIMENSIONS

A	WHEELBASE	150"
B	OVERALL LENGTH (LESS FORKS)	334"
C	OVERALL WIDTH	104"
D	OVERALL HEIGHT	100"
E	GROUND CLEARANCE	16"
F	OUTSIDE TURNING RADIUS	228"
	MAX. LIFT CAPACITY	16,000 lbs.
	LIFT HEIGHT	34 feet
	REACH (front tire to 24" L.C.)	23 feet
	NEGATIVE REACH	48"
	CARRIAGE TILT ANGLE - Forward	102 - Back 13

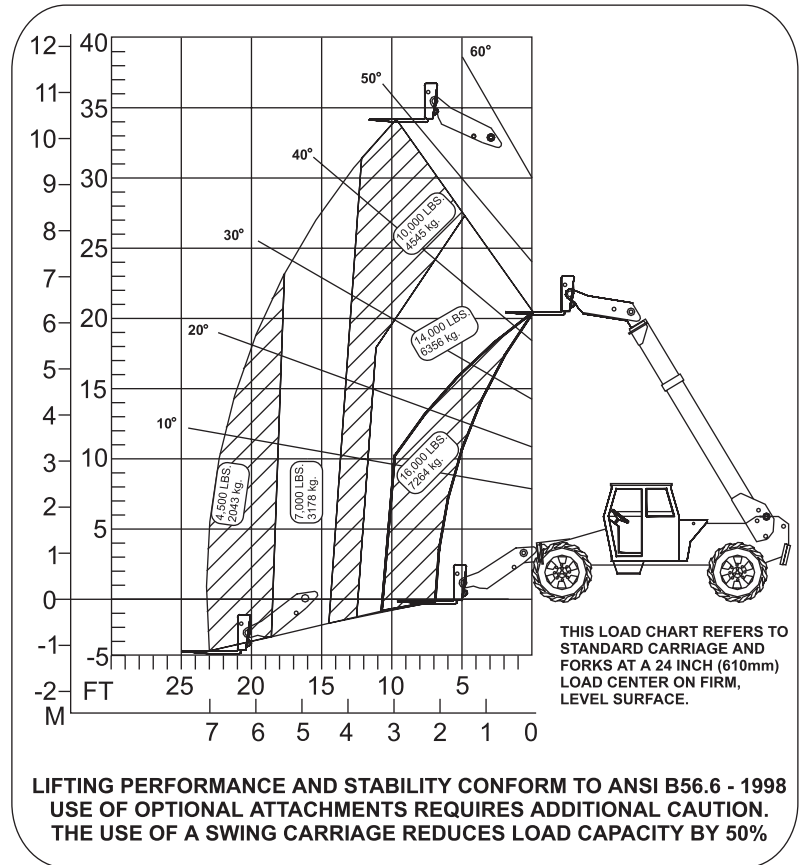
#### STANDARD EQUIPMENT:

- ◆ NEUTRAL GEAR SELECT SAFETY START IGNITION SWITCH.
- ◆ FULL GAUGE CLUSTER INCLUDES HOUR METER.
- ◆ DASH MOUNT FRAME LEVEL INDICATOR.
- ◆ DASH MOUNT HORN SWITCH ◆ BACK-UP BEEPER.
- ◆ VANDALISM LOCKOUT PROTECTION TO MAIN COMPONENTS AND GAUGE CLUSTER.
- ◆ ELECTRICAL SYSTEM 12 VOLT, TWO HEAVY DUTY BATTERIES .
- ◆ DRY TYPE AIR CLEANER - TWIN ELEMENT.
- ◆ ANTIFREEZE TYPE COOLANT IN RADIATOR.
- ◆ OPERATOR COMPARTMENT PROTECTED BY CANOPY.
- ◆ MECHANICAL LEVER FOR EMERGENCY HAND BRAKE.
- ◆ FENDERS ON ALL FOUR TIRES
- ◆ 50" CARRIAGE WITH 40" FORKS.
- ◆ ADJUSTABLE SEAT COMPLETE WITH SEAT BELT.

#### ADDITIONAL EQUIPMENT:

TOTALLY ENCLOSED CAB COMPLETE WITH SAFETY GLASS, FRONT WINDSHIELD WIPER AND FAN. STANDARD WORK LIGHT PACKAGE.

THE INFORMATION CONTAINED HEREIN IS GENERAL IN NATURE AND IS NOT INTENDED FOR SPECIFIC APPLICATION PURPOSES. TOVEL RESERVES THE RIGHT TO MAKE CHANGES IN SPECIFICATIONS SHOWN HEREIN, AND IMPROVEMENTS, OR DISCONTINUE MANUFACTURE AT ANY TIME WITHOUT NOTICE OR OBLIGATION.



Oct.00